

Pictures of the programmes

Hawkstone Estate before and after—and sheet piling on the East Dulwich Estate (In Partnership with Keepmoat)

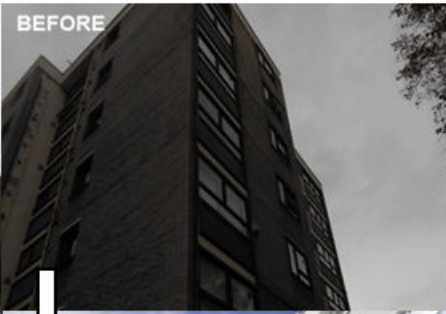
APPENDIX 1



Various Street Properties—before and after (In Partnership with Saltash)



Forbes, Gould and Heaton House—before and after (In Partnership with A&E Elkins)



APPENDIX 2

A review of the WDS programme up to March 2015.

Four Squares (New Place Estate)

Status: **On site**

Type of works: **WDS plus additional funding as a High Investment Needs Estate (HINE)**

Comment: Four Squares is a High Investment Needs Estate. A total of £26.6m was originally set aside to be invested including HINE funding. An options appraisal exercise to determine the scale of works required to the estate and the different approaches that could be taken was carried out. It was decided that an enhanced refurbishment scheme would be undertaken and that void properties on the estate would be disposed of to contribute to the value of £9m. Following the decision, a condition survey was undertaken, and a number of structural problems came to light, including brick slips falling from the towers and the instability of several gable ends. As a result, the Council commissioned a comprehensive structural survey of the Estate which recommended a number of structural works particularly to the south west stair towers of Layard and Marden. The funding estimate for this estate did not include these additional structural works. Additional High Investment Needs (HINE) money has been agreed to carry out the additional work identified from the structural surveys including structural work to the stair towers and brickwork at roof level, additional concrete repairs, asphalt on balconies and extensive works to waterproof garages (major removal and reinstatement of soft landscaping and boundary walls not originally specified).

Area	Actual spend to March 2015	Progress	Status / Comments
Four Squares Security and WDS (New Place Estate)	£12.9m (£13.1m HINE)	On site (completion delayed due to increased scope of works)	Four squares started in 2012/13 as scheduled. The externals started in early 2014/15 following agreement of additional funding to complete the work identified through structural surveys and will be substantially completed in 2015/16.

Elmington Estate (Drayton / Langland only)

Status: **On site**
Type of works: **WDS and additional works to Drayton / Langland only**

Comment: This scheme has completed as outlined in the original agreed programme. The schemes budget had been revised and agreed through delegated approval to £2.1m with the additional funding coming from the contingency allowed in the programme but costs are under that budget.

Area	Actual spend to March 2015	Progress	Status / Comments
Elmington	£1.8m	Completed	Elmington completed as scheduled starting in 2012/13 and completing in 13/14.

Landlord Obligations (Individual Heating)

Status: **Ongoing programme of boiler replacements**
Type of works: To support the capitalisation of heating works undertaken via the term contractors as part of the ECON contract.

Comment: Additional money was brought forward from our 2015/16 individual heating programme into 2012/13 meaning inefficient boilers were replaced with more efficient models helping to deliver earlier savings for residents and tackle fuel poverty. Over 8,000 boilers have been replaced from WDS funding. Tadworth House heating has also been completed.

Area	Actual spend to March 2015	Progress	Status / Comments
Landlord Obligations (Individual Heating)	£18.9m	On going	This programme is ahead of the original schedule.

Landlord Obligations (District Heating)

Status: **Ongoing programme of district heating works**
 Type of works: **District Heating Works**

Comment: Overall the district Heating Programme is running well with the remaining schemes due to start in 2015/16..

Area	Actual spend to March 2015	Progress	Status / Comments
Landlord Obligations (District Heating)	£13.2m	On going	All schemes except one planned to start by 2013/14 are on site or completed. The remaining schemes are due to start in 2015/16 with the exception of Acorn underground heating mains which was delayed due to the heating redesign as part of a regeneration scheme.

Individual Scheme progress (district heating 2011/12-2014/15)

Scheme	Progress	Status / Comments
New Place flow header	Works not required	Works not required, money moved to BEMS ¹ upgrade.
Gilesmead heating	Completed	Completed
District heating works Capitalisation of plant works	On going	Spend on this programme is ahead of schedule with more capital works being carried out on district heating than originally planned.

¹ Building Management Systems (BEMS) monitor and control services such as heating, ensuring they operate at maximum levels of efficiency and economy. This is achieved by maintaining the optimum balance between environmental conditions, energy usage and operating requirements.

Scheme	Progress	Status / Comments
undertaken via the term contractors		
Kinglake Heating/Boiler	Completed	Completed
Salisbury Heating	Completed	Completed
Portland St ctls	Completed	Completed under budget with the remainder transferred to BEMS
Newington Heating	Completed	Completed
Newington Mains	Completed	Completed
New Place Boiler Replacement	Completed	Completed
BEMS upgrade	Completed	Completed. A second BEMS phase is underway.
Kinglake Heating/Boiler	Completed	Completed under original budget costs. Surplus budget transferred to BEMS.
Neville Boiler House boiler and flue	Completed	Completed
Rouel road Mains	Completed	Completed
New Place Boiler Replacement	Completed	Completed
Hastings Boiler House boiler and burner	Completed	Completed
Leontine Boiler House boiler and flue	Completed	Completed
Neville Boiler House boiler and flue	Completed	Completed
North Peck Boilers	Completed	Completed

WDS Estates and WDS Street Properties

Status: **See individual schemes below**

Type of works: **WDS**

Comments: Most of the planned schemes to 2014/15 are completed or on site, however, the original programme was delayed due to the LVT decision and some have been further delayed due to the ending of partnering contracts. Where the partnering contracts have ended alternative arrangements have been put in place using back up contractors or tendering the works.

Area	Actual spend to March 2015	Progress	Status / Comments
WDS Estates and WDS Street Properties	£109.2m	Completed or on site (with exceptions)	Many of these schemes are now complete and the majority of the rest of the schemes are on site.

Original WDS programmed works 2012/13 (schemes)	Estate	Progress	Area	Ward	Status / Comments
Brandon Estate (Camberwell)	Brandon	Completed	Camberwell	Camberwell Green	Completed.
Croxted Road	Croxted	Completed	Dulwich	College	Completed.
Brandon (Walworth) contract 1,2 & 3	Brandon	On site	Walworth	Newington	Start delayed due to the mutual conclusion of the Breyer contract. Contracts 1 & 2 have completed, additional works were added to phase 3 meaning it will complete in 2015/16.
Dickens Estate	Dickens	Completed	Bermondsey	Riverside	Completed. A second phase of works in on site and due to complete in 2015/16.
Comber 2012 Phase 1 & 2	Comber	Completed	Camberwell	Camberwell Green	Completed.
Elmington 2012	Elmington	Completed	Camberwell	Camberwell	Completed.

Original WDS programmed works 2012/13 (schemes)	Estate	Progress	Area	Ward	Status / Comments
				Green / Vrs	
WDS Street Properties 12/13 (excluding Sunray Estate)	Various street properties	Completed	Various	Various	Completed. However, due to a change in the scope of the works at the Sunray Estate this is being completed separately and is due to complete in 2015/16.

Original WDS programmed works 2013/14 (schemes)	Estate	Progress	Area	Ward	Status / Comments
Clifton Estate	Clifton	Complete	Nunhead & Peckham Rye	The Lane	Complete.
Crawford Estate	Crawford	Complete	Camberwell	Camberwell Green	Complete.
Congreve / Salisbury (also includes Comus House brought forward from 2015/16)	Congreve	On site	Walworth	Faraday	Tendered following the conclusion of the partnering contract, on site and due to complete in 2015/16.
	Salisbury				
Denmark Hill Estate	Crawford	Complete	Camberwell	Camberwell Green	Complete.
Scovell Estate (also includes four blocks from Tabard Gardens brought forward)	Scovell	On site	Borough & Bankside	Cathedrals	Tendered following the conclusion of the partnering contract, on site and due to complete in 2015/16.
Tustin Estate	Tustin	Delayed	Rotherhithe	Livesey	Work on the Tustin Estate has been delayed due to the level of work required to meet the WDS standard. Work is expected to commence in 2015/16.
Wyndham Estate	Wyndham	Complete	Camberwell	Camberwell Green	On site and completing in 2014/15.
Aylesbury Estate	Aylesbury	On site	Walworth	Faraday	Works were delayed into 2014/15, as they needed to be scheduled around the phasing of the regeneration. Phase 1 is on site and

Original WDS programmed works 2013/14 (schemes)	Estate	Progress	Area	Ward	Status / Comments
					due to complete in 2015/16 and Phase 2 will be on site in 2015/16.
Acorn Estate	Acorn	Delayed	Peckham	Livesey	The works to the Acorn Estate are pending regeneration works and are now expected to start on site in 2015/16.
WDS Street Properties 13/14	Various street properties	On site	Various	Various	On site, completing in early 2015/16. A further batch of properties will start in 2015/16.

Original WDS programmed works 2014/15 (schemes)	Estate	Progress	Area	Ward	Status / Comments
Pomeroy Estate	Pomeroy	Complete	Nunhead & Peckham Rye	The Lane	Complete
Priory Court	Priority Court	Complete	Nunhead & Peckham Rye	Peckham Rye	Complete
Pelican Estate	Pelican	Complete	Nunhead & Peckham Rye	The Lane	Complete
Lugard Road	Lugard Road	Complete	Nunhead & Peckham Rye	Nunhead	Complete
Magdalene Close	Magdalene Close	Complete	Nunhead & Peckham Rye	The Lane	Complete
Atwell Estate	Atwell Estate	Complete	Nunhead & Peckham Rye	The Lane	Complete
Gaywood Estate / Nelson Square Gardens	Gaywood Estate	On site	Borough & Bankside	Cathedrals	On site due to complete in 2015/16
	Nelson Square Gardens	On site	Borough & Bankside	Cathedrals	On site due to complete in 2015/16

Original WDS programmed works 2014/15 (schemes)	Estate	Progress	Area	Ward	Status / Comments
Lancaster Estate / Rushworth-Boyfield	Lancaster	On site	Borough & Bankside	Cathedrals	On site due to complete in 2015/16
	Rushworth- Boyfield	On site	Borough & Bankside	Cathedrals	On site due to complete in 2015/16
Newington Estate	Newington	On site	Walworth	Newington	On site due to complete in 2015/16
Kinglake Estate	Kinglake	On site	Walworth	East Walworth Faraday	On site due to complete in 2015/16
Lettsom Estate	Lettsom	On site	Camberwell	Brunswick Park	On site due to complete in 2015/16
Southampton Way Estate	Southampton Way	Complete	Camberwell	Brunswick Park	Complete
Havil Street Estate	Beacon House	Complete	Camberwell	Brunswick Park	Complete
	Havil Street	Complete	Camberwell	Brunswick Park	Complete
Tabard Gardens Estate (North inc Kellow House, Central, South)	Tabard Gardens	On site	Borough & Bankside	Chaucer	The central and South packages are on site and due to complete in 2015/16. The North package is starting in early 2015/16, includes Kellow House that was in the 2015/16 programme.
Rockingham Estate (East including Quentin House, West)	Quentin House	On site	Borough and Bankside	Cathedrals	Quentin House is on site due to complete in 2015/16
	Rockingham	On site / Delayed	Borough and Bankside	Chaucer East Walworth	The East Package is on site, the west package is due on site early in 2015/16 and both are due to complete in 2015/16
Nelson Estate / Penrose House	Nelson	On site	Walworth	Faraday	On site due to complete in 2015/16
	Penrose House	On site	Walworth	Newington	On site due to complete in 2015/16
Doddington Grove Estate	Doddington Grove	On site	Walworth	Newington	On site due to complete in 2015/16
Portland Estate	Portland	Delayed	Walworth	Faraday	Portland Estate requires structural works which has delayed the start to 2015/16

Original WDS programmed works 2014/15 (schemes)	Estate	Progress	Area	Ward	Status / Comments
Alvey / Mardyke / Naylor	Alvey	On site	Walworth	East Walworth	On site due to complete in 2015/16
	Mardyke	On site	Walworth	East Walworth	On site due to complete in 2015/16
	Naylor	On site	Walworth	East Walworth	On site due to complete in 2015/16
Burton / Morriss	Morriss House	Complete	Bermondsey	Riverside	Complete, including Burton House from the 2015/16 programme.
Rennie Estate	Rennie	On site	Bermondsey	South Bermondsey	On site due to complete in 2015/16
Silverlock/ Pedworth/ Bonamy/ Harboard/ Haddonfield	Silverlock	On site	Rotherhithe	Livesey	On site due to complete in 2015/16
	Pedworth	On site	Rotherhithe	Rotherhithe	On site due to complete in 2015/16
	Bonamy	On site	Rotherhithe	Livesey	On site due to complete in 2015/16
	Harboard House	On site	Rotherhithe	Rotherhithe	On site due to complete in 2015/16
	Haddonfield	On site	Rotherhithe	Rotherhithe	On site due to complete in 2015/16
Osprey Estate	Osprey	On site	Rotherhithe	Surrey Docks	On site due to complete in 2015/16
D'Eynsford Estate	D'Eynsford	On site / Delayed	Camberwell	Brunswick Park Camberwell Green	Main works are delayed pending heating works, the internals are on site and due to complete in 2015/16.
Cleve Hall Estate (as part of Champion Hill package)	Cleve Hall	On site	Camberwell	South Camberwell	Internal package is on site with the externals following on in 2015/16.
Glebe Estate	Glebe	On site	Camberwell	Brunswick Park	Internal package is on site with the externals following on in early 2015/16.
Bells Garden Estate (as part of Bells Gardens / Oliver Goldsmith Estate Package)	Bells Garden	Delayed	Peckham	Peckham	Packaged with the 2015/16 programme to start on site early in 2015/16.
Barset Estate (as part of Electrical Internal Package B)	Barset	On site	Nunhead & Peckham Rye	Nunhead	On site due to complete in 2015/16
Honiton Gardens	Honiton Gardens	Surveyed no works	Nunhead & Peckham Rye	Nunhead	Surveyed no works required in meeting WDS standard.
Delawyck Crescent Estate (as part of External Electrical	Delawyck Crescent	Delayed	Dulwich	Village	Packaged with 2015/16 programme to start on site in 2015/16.

Original WDS programmed works 2014/15 (schemes)	Estate	Progress	Area	Ward	Status / Comments
Package 3)					
Kingswood Estate	Kingswood	Surveyed no works	Dulwich	College	Surveyed no works required in meeting WDS standard. 1-15 Lyall Avenue staying in programme and packaged with the 2015/16 programme to start in 2015/16.
Sydenham Hill Estate	Sydenham	Surveyed no works	Dulwich	College	Surveyed no works required in meeting WDS standard.
Street Properties 2014/15	Streets	On site	Various	Various	There are 6 packages of street properties that are on site and due to complete in 2015/16

WDS - Landlord Obligations (Electrical Works)

Status: **A programme of works**
Type of works: **Essential electrical works which have arisen as a result of FRA electrical tests and essential replacement of communal, lateral electrical wiring and associated equipment**

Comment: FRA electrical works have been undertaken. An additional £5m revenue funding has been spent on electrical works, the remaining £5.5m in the budget for FRA electrical works will be used in the FRA budget.

Area	Actual spend to March 2015	Progress	Status / Comments
WDS - Landlord Obligations (Electrical Works)	£3.4m	On going	£5.5m used for FRA works.

WDS - Landlord Obligations (Lifts)

Status: **Ongoing programme**

Type of works:

To replace lift parts which have become obsolete, resulting in ever increasing service failures. These works will result in improved lift performance and reliability.

Comment: The lift programme continues to run to schedule with over 150 lifts having been refurbished by March 2015.

Area	Actual spend to March 2015	Overall Progress	Comments
WDS - Landlord Obligations (Lifts)	£10.2m	On going	This programme is running well and is ahead of schedule.

Minor Voids Capitalisation

Status:

Ongoing programme

Type of works:

Capitalisation of voids works

Area	Actual spend to March 2015	Progress	Status / Comments
Minor Voids Capitalisation	£12.1m	On going	Capitalisation of voids works

Minor Voids WDS Works

Status: **Ongoing programme**
Type of works: **Minor voids works**

Area	Actual spend to March 2015	Progress	Status / Comments
Minor Voids WDS Works	£3.8m	On going	Minor Voids Works

Current Schemes incorporating FRA Moderate and Substantial Contingency

Status: **See breakdown below**
Type of works: **Incorporated all current schemes at the time of the Warm, Dry and Safe, mainly the FRA programme and the two year programme.**

Area	Actual spend to March 2014	Progress	Status / Comments
Current Schemes	£78m	Complete	All the substantial and nearly all of the original planned higher moderate high rise FRAs works are now complete. There are some delays in 2 year programme due to the ending of the partnering contracts.

FRA works

Comment: The programme to address issues arising from the Fire Risk Assessments for historic blocks is split into two sections: Only spend from 2011/12 onwards would be from the WDS budget.

a. Substantial blocks; those identified as in need of urgent action

b. Moderate blocks – requiring significant actions to bring to tolerable level

All the substantial risk blocks are now complete and the higher risk medium blocks complete.

Original WDS programmed works	Progress	Risk	No of blocks	Status / Comments
Columbia / Regina	Complete	Substantial	2	
Maydew House	Complete	Substantial	1	
Witcombe Point	Complete	Substantial	1	
Perronet House	Complete	Substantial	1	
Castlemead	Complete	Substantial	1	
Marie Curie	Complete	Substantial	1	
Wickway Court	Complete	Substantial	1	
Aylesbury Smoke Alarms	Complete	Substantial	0	
Crane House	Complete	Substantial	1	
Bradenham & Chiltern	Complete	Substantial	2	
Wendover	Complete	Substantial	2	
Brydale	Complete	Substantial	1	
Hanworth & Trevelyan	Complete	Substantial	2	
Taplow & Missenden	Complete	Substantial	3	
Dodson / Guthrie / Jurston	Complete	Substantial	3	
Aberfeldy / Glenfinlas / Kirwyn	Complete	Substantial	3	
Coniston & Kevan	Complete	Substantial	2	
Rye Hill (30-120) (122-208) (210-296)	Complete	Moderate	3	
Rowland Hill House	Complete	Moderate	1	
Styles House	Complete	Moderate	1	
Casby / Lupin	Complete	Moderate	2	
Prospect House	Complete	Moderate	1	
Crystal Court	Complete	Moderate	1	
Tissington Court FRA Works	Complete	Moderate	1	
Bermondsey & Rotherhithe Package 1	Complete	Moderate	11	
Borough&Bankside & Walworth Package 1	Complete	Moderate	17	

Original WDS programmed works	Progress	Risk	No of blocks	Status / Comments
Borough&Bankside & Walworth Package 2	Complete	Moderate	33	
Netley House	Complete	Moderate	1	
Camberwell & Peckham Package 2	Complete	Moderate	19	
Nunhead & Dulwich Package 1	Complete	Moderate	11	
Fontenelle	Complete	Moderate	1	
Bermondsey & Rotherhithe Package 2	Complete	Moderate	44	
Draper House	Complete	Moderate	1	
Camberwell & Peckham Package 1	Complete	Moderate	20	
Gloucester Grove	Complete	Moderate	7	Funded out of the contingency budget

Sidmouth House has also been added to the programme, now due to start in 2015/16.

2 year programme

Original WDS programmed works	Progress	Status / Comments
Proctor / Flatman/Brisbane Refurbishment	Complete	
63-78 Marchwood Close	Complete	
Crystal Court Refurb	Complete	
Cossall Estate Phase 2	Complete	
Street Properties 11/12	Complete	
Rockingham Estate	Complete	
Sceaux Gardens	Complete	
Draper House refurbishment	Complete	
St Saviours Estate 1b	Complete	
St Saviours Estate 2	Complete	
MW Consort Estate	Complete	
Manor Estate 4	Complete	
John Kennedy House Refurbishment	Complete	

Other Current Schemes

There are a number of other existing schemes that incurred WDS spend largely at the end of the defect period. The council has also completed a borough wide insulation programme.

WDS Contingency

Area	Actual spend to March 2015	Progress	Status / Comments
WDS Contingency	£3.5m	N/A	The majority of the spend is for previously unidentified FRA works at Gloucester Grove (£2.2m) which have been completed and scaffold costs pending works at Portland and Four Squares.

APPENDIX 3

Landlord Obligations (Individual Heating)

Status: **On going programme of boiler replacements**

Type of works: To support the capitalisation of heating works undertaken via the term contractors as part of the ECON contract.

Works area	Planned Start on site Date	Original planned start on site date	Comment
WDS - Landlord Obligations (Individual Heating)	On going Programme	On going Programme	The on going replacement of inefficient boilers is continuing, with a particular focus on the replacement of back boilers.

Landlord Obligations (District Heating)

Status: **On going programme of district heating works**

Type of works: **District Heating Works**

Works area	Planned Start on site Date	Original planned start on site date	Comment
District Heating 15/16	2015/16	2015/16	The 2015/16 schemes are planned to start in 2015/16 with the exception of Acorn.

Scheme	Planned Start on site Date	Original planned start on site date	Comment
District heating works Capitalisation of plant works undertaken via the term contractors	On going programme	On going programme	Spending and works are ahead of schedule.
Helen Gladstone Boiler House boiler and burner	2015/16	2015/16	Due on site in 2015/16

Scheme	Planned Start on site Date	Original planned start on site date	Comment
Stanswood Boiler House boiler and flue	Repaired	2015/16	Repair completed as part of the on going boiler programme
Underhill Road Plant Room boiler	2015/16	2015/16	Due on site in 2015/16
Heron House Boiler House pump and boiler	2015/16	2015/16	Due on site in 2015/16
Barlow Boiler House boiler and burner	2015/16	2015/16	Due on site in 2015/16
Leysdown Boiler House boiler, burner and flue	2015/16	2015/16	Due on site in 2015/16
Minnow Walk Boiler House boiler and flue	2015/16	2015/16	Due on site in 2015/16
Plaxdale Boiler House boiler and flue	Repaired	2015/16	Repair completed as part of the on going boiler programme
Portland Boiler House boiler and flue	2015/16	2015/16	Due on site in 2015/16
Soane House Boiler House boiler, burnera dn flue	2015/16	2015/16	Due on site in 2015/16
Albert Wescott Boiler House boiler and burner	2015/16	2015/16	Due on site in 2015/16
Conant Boiler House boiler and burner	2015/16	2015/16	Due on site in 2015/16
King Charles Court Boiler House boiler and flue	2015/16	2015/16	Due on site in 2015/16
Acorn Mains	2016/17	2015/16	Acorn underground mains was delayed due to the heating redesign as part of a regeneration scheme and works will now commence in 2016/17.

WDS - Landlord Obligations (Electrical Works)

Status: **See individual schemes**

Type of works: **Essential electrical works which have arisen as a result of FRA electrical tests and essential replacement of communal, lateral electrical wiring and associated equipment**

Work area	Planned Start on site Date	Original planned start on site date	Comment
WDS - Landlord Obligations (Electrical Works)	Ongoing Programme	Ongoing Programme	Remaining £5.5m in the budget for FRA electrical works was transferred to the FRA budget. Any remaining electrical works are being carried out alongside the main works.

WDS - Landlord Obligations (Lifts)

Status: **Ongoing programme**

Type of works: **To replace lift parts which have become obsolete, resulting in ever increasing service failures. These works will result in improved lift performance and reliability.**

Work area	Planned Start on site Date	Original planned start on site date	Comment
WDS - Landlord Obligations (Lifts)	Ongoing Programme	Ongoing Programme	A further 10 lifts are planned to be refurbished.

Warm, Dry, Safe Programmes 2015/16

Status: **See individual schemes below**
 Type of works: **WDS**

Work area	Planned Start on site Date	Original planned start on site date	Comment
Warm, Dry, Safe Estate Properties 15/16	2014/15 - 2015/16	2015/16	Some schemes have started earlier, however the majority of schemes are due to commence in 2015/16.

Estate	Planned Start on site Date	Original planned start on site date	Area	Ward	Comment
ARNOLD ESTATE	2015/16	2015/16	Bermondsey	Riverside	As scheduled.
ASTLEY ESTATE	2015/16	2015/16	Bermondsey	South Bermondsey	As scheduled.
AYLWIN ESTATE	2015/16	2015/16	Bermondsey	Grange	As scheduled.
BURTON HOUSE	2013/14	2015/16	Bermondsey	Riverside	Completed.
CHARLES MACKENZIE	2015/16	2015/16	Bermondsey	Grange	As scheduled.
CHERRY GARDEN ESTATE	2015/16	2015/16	Bermondsey	Riverside	As scheduled.
CHERRY GARDEN HOUSE	2015/16	2015/16	Bermondsey	Riverside	As scheduled.
CHERRY GARDEN STREET	2015/16	2015/16	Bermondsey	Riverside	As scheduled.
COXSON WAY	2015/16	2015/16	Bermondsey	Riverside	As scheduled.
CRANBOURNE HOUSE	2015/16	2015/16	Bermondsey	Riverside	As scheduled.
CREASY ESTATE	2015/16	2015/16	Bermondsey	Grange	As scheduled.
DEVON MANSIONS	2015/16	2015/16	Bermondsey	Riverside	As scheduled.
ELDRIDGE COURT	2015/16	2015/16	Bermondsey	Grange	As scheduled.
FAIR STREET ESTATE	2015/16	2015/16	Bermondsey	Riverside	As scheduled.
FOUNTAIN HOUSE	2015/16	2015/16	Bermondsey	Riverside	As scheduled.
HAROLD ESTATE	2015/16	2015/16	Bermondsey	Grange	As scheduled.

Estate	Planned Start on site Date	Original planned start on site date	Area	Ward	Comment
KEETONS ESTATE	2014/15	2015/16	Bermondsey	Riverside	Internals worked commenced in 2014/15, externals are due in 2015/16.
LEWES HOUSE	Meeting WDS standard	2015/16	Bermondsey	Riverside	Not requiring works to meet the WDS standard.
LONGFIELD ESTATE	2015/16	2015/16	Bermondsey	South Bermondsey	As scheduled.
LYNTON ESTATE	2015/16	2015/16	Bermondsey	South Bermondsey	As scheduled.
MAWBAY ESTATE	2015/16	2015/16	Bermondsey	South Bermondsey	As scheduled.
PETER BUTLER HOUSE	2014/15	2015/16	Bermondsey	Riverside	Completed.
PURBROOK ESTATE	2015/16	2015/16	Bermondsey	Grange	Planned to be brought forward.
ROUEL ROAD ESTATE	2013/14	2015/16	Bermondsey	Grange South Bermondsey	On site completing 2015/16.
SETCHELL ESTATE	2015/16	2015/16	Bermondsey	Grange	Any work to be confirmed.
SOUTHWARK PARK ESTATE	2015/16	2015/16	Bermondsey	Riverside	As scheduled.
SOUTHWARK PARK ROAD	2015/16	2015/16	Bermondsey	Riverside South Bermondsey	As scheduled.
ST CRISPINS ESTATE	2014/15	2015/16	Bermondsey	Riverside	Internals worked commenced in 2015/16.
ST JOHNS ESTATE	2015/16	2015/16	Bermondsey	Riverside	As scheduled.
ST OLAVES ESTATE	2015/16	2015/16	Bermondsey	Riverside	As scheduled.
TANNER HOUSE	2015/16	2015/16	Bermondsey	Grange	As scheduled.
THORBURN SQUARE	2014/15	2015/16	Bermondsey	South Bermondsey	Brought forward due to roof works required
TOWER BRIDGE BUILDINGS	2014/15	2015/16	Bermondsey	Riverside	Started in 2014/15.
WESSEX HOUSE	2015/16	2015/16	Bermondsey	South Bermondsey	As scheduled.
WEST LANE	2015/16	2015/16	Bermondsey	Riverside	As scheduled.
ABBAYFIELD ESTATE	2014/15	2015/16	Rotherhithe	Rotherhithe	Damory / Thaxted only Maydew in 2015/16.

Estate	Planned Start on site Date	Original planned start on site date	Area	Ward	Comment
AINSTY ESTATE	2015/16	2015/16	Rotherhithe	Rotherhithe	As scheduled.
ALBION ESTATE	2015/16	2015/16	Rotherhithe	Rotherhithe	As scheduled.
AYLTON ESTATE	2015/16	2015/16	Rotherhithe	Rotherhithe	As scheduled.
BRADLEY HOUSE	2015/16	2015/16	Rotherhithe	Rotherhithe	As scheduled.
BRAMCOTE GROVE	2015/16	2015/16	Rotherhithe	Livesey	As scheduled.
BRUNEL ESTATE	2015/16	2015/16	Rotherhithe	Rotherhithe	As scheduled.
CANADA ESTATE	2015/16	2015/16	Rotherhithe	Rotherhithe	As scheduled.
CATHAY HOUSE	2015/16	2015/16	Rotherhithe	Rotherhithe	As scheduled.
COURTHOPE HOUSE	2015/16	2015/16	Rotherhithe	Rotherhithe	As scheduled.
DOWNTOWN ESTATE	2015/16	2015/16	Rotherhithe	Surrey Docks	As scheduled.
FRANKLAND CLOSE ESTATE	2015/16	2015/16	Rotherhithe	Rotherhithe	As scheduled.
GOMM ROAD	2015/16	2015/16	Rotherhithe	Rotherhithe	As scheduled.
HENLEY CLOSE	Meeting WDS standard	2015/16	Rotherhithe	Rotherhithe	Found to be meeting WDS standard.
HOWLANDS ESTATE	2015/16	2015/16	Rotherhithe	Rotherhithe	As scheduled.
IRWELL ESTATE	2015/16	2015/16	Rotherhithe	Rotherhithe	As scheduled.
KIRBY ESTATE	2015/16	2015/16	Rotherhithe	Rotherhithe	As scheduled.
MILLPOND ESTATE	2015/16	2015/16	Rotherhithe	Rotherhithe	As scheduled.
PLOUGH ESTATE	2015/16	2015/16	Rotherhithe	Surrey Docks	As scheduled.
PYNFOLDS ESTATE	2015/16	2015/16	Rotherhithe	Rotherhithe	As scheduled.
RISDON HOUSE	2015/16	2015/16	Rotherhithe	Rotherhithe	As scheduled.
SLIPPERS PLACE ESTATE,(FORMERLY ARICA HOUSE)	2015/16	2015/16	Rotherhithe	Rotherhithe	As scheduled.
ST MARYS ESTATE	2015/16	2015/16	Rotherhithe	Rotherhithe	As scheduled.
SWAN ROAD ESTATE	2015/16	2015/16	Rotherhithe	Rotherhithe	As scheduled.

Estate	Planned Start on site Date	Original planned start on site date	Area	Ward	Comment
TISSINGTON COURT	2014/15	2015/16	Rotherhithe	Rotherhithe	Started in 2014/15.
WESTFIELD HOUSE	2015/16	2015/16	Rotherhithe	Rotherhithe	As scheduled.
ALBERT BARNES HOUSE	2015/16	2015/16	Borough & Bankside	Chaucer	As scheduled.
AMIGO HOUSE	2015/16	2015/16	Borough & Bankside	Cathedrals	As scheduled.
AYRES STREET	2015/16	2015/16	Borough & Bankside	Cathedrals	As scheduled.
BANKSIDE EDGAR DEVELOPMENT	2015/16	2015/16	Borough & Bankside	Cathedrals	As scheduled.
BOROUGH ROAD ESTATE	2015/16	2015/16	Borough & Bankside	Cathedrals	As scheduled.
BROOK DRIVE	Meeting WDS standard	2015/16	Borough & Bankside	Cathedrals	Found to be meeting WDS standard.
COOPER CLOSE	2015/16	2015/16	Borough & Bankside	Cathedrals	As scheduled.
DODSON ESTATE	2015/16	2015/16	Borough & Bankside	Cathedrals	As scheduled.
HADDONHALL ESTATE	2015/16	2015/16	Borough & Bankside	Chaucer	As scheduled.
HAYLES BUILDINGS	2015/16	2015/16	Borough & Bankside	Cathedrals	As scheduled.
KELLOW HOUSE	2015/16	2015/16	Borough & Bankside	Chaucer	As scheduled.
LANT ESTATE	2015/16	2015/16	Borough & Bankside	Cathedrals	As scheduled.
MARSHALSEA ESTATE	2015/16	2015/16	Borough & Bankside	Cathedrals	As scheduled.

Estate	Planned Start on site Date	Original planned start on site date	Area	Ward	Comment
PARK STREET ESTATE	2015/16	2015/16	Borough & Bankside	Cathedrals	As scheduled.
ROCHESTER ESTATE	2015/16	2015/16	Borough & Bankside	Cathedrals	As scheduled.
SMEATON COURT	Meeting WDS standard	2015/16	Borough & Bankside	Chaucer	
WEBBER ROW ESTATE	Meeting WDS standard	2015/16	Borough & Bankside	Cathedrals	
ALBANY ROAD	2015/16	2015/16	Walworth	Faraday	As scheduled.
BROCKLEY HOUSE	2015/16	2015/16	Walworth	Faraday	As scheduled.
BROWNING ESTATE	2015/16	2015/16	Walworth	East Walworth	As scheduled.
COMUS HOUSE	2014/15	2015/16	Walworth	East Walworth	Brought forward (packaged with Congreve)
COOKS ROAD	2015/16	2015/16	Walworth	Newington	As scheduled.
DARWIN STREET	2015/16	2015/16	Walworth	East Walworth	As scheduled.
DRAPER ESTATE	2015/16	2015/16	Walworth	Newington	As scheduled.
GAITSKELL HOUSE	2015/16	2015/16	Walworth	Faraday	As scheduled.
GATEWAY ESTATE	2015/16	2015/16	Walworth	Faraday	As scheduled.
HAMPTON HOUSE	2015/16	2015/16	Walworth	Newington	As scheduled.
INVILLE ESTATE	2015/16	2015/16	Walworth	Faraday	As scheduled.
KENNEDY WALK	2015/16	2015/16	Walworth	East Walworth	As scheduled.
KENNINGTON PARK HOUSE	2015/16	2015/16	Walworth	Newington	As scheduled.
KENNINGTON PARK ROAD	2015/16	2015/16	Walworth	Newington	As scheduled.
KINGSTON ESTATE	2015/16	2015/16	Walworth	Faraday	As scheduled.
MANCHESTER HOUSE	2015/16	2015/16	Walworth	East Walworth	As scheduled.
MANOR PLACE	2015/16	2015/16	Walworth	Newington	As scheduled.
MICHAEL FARADAY HOUSE	2015/16	2015/16	Walworth	Faraday	As scheduled.

Estate	Planned Start on site Date	Original planned start on site date	Area	Ward	Comment
MINNOW STREET ESTATE	2015/16	2015/16	Walworth	East Walworth	As scheduled.
NURSERY ROW	2015/16	2015/16	Walworth	East Walworth	As scheduled.
ORB STREET	2015/16	2015/16	Walworth	East Walworth	As scheduled.
PASLEY ESTATE	2015/16	2015/16	Walworth	Newington	As scheduled.
PELIER ESTATE	2015/16	2015/16	Walworth	Newington	As scheduled.
PULLENS ESTATE	2015/16	2015/16	Walworth	Newington	As scheduled.
STOPFORD ROAD	2015/16	2015/16	Walworth	Newington	As scheduled.
BONSOR STREET	2014/15	2015/16	Camberwell	Brunswick Park	Started in 2014/15
BROMAR ROAD	2015/16	2015/16	Camberwell	South Camberwell	As scheduled.
CAMBERWELL GROVE ESTATE	2015/16	2015/16	Camberwell	Brunswick Park South Camberwell	As scheduled.
CASTLEMEAD	2015/16	2015/16	Camberwell	Camberwell Green	As scheduled.
CHAMPION HILL ESTATE	2014/15	2015/16	Camberwell	South Camberwell	Internals started in 2014/15.
CHAMPION PARK ESTATE	2014/15	2015/16	Camberwell	South Camberwell	Internals started in 2014/15.
CRAWFORD ROAD	2014/15	2015/16	Camberwell	Camberwell Green	Internals started in 2014/15.
DOWLAS ESTATE	2014/15	2015/16	Camberwell	Brunswick Park Camberwell Green	Started in 2014/15.
ELMINGTON ROAD	2015/16	2015/16	Camberwell	Brunswick Park	As scheduled.
GILESMEAD	2015/16	2015/16	Camberwell	Brunswick Park	Scheme to follow district heating works.
GOSCHEN ESTATE	2014/15	2015/16	Camberwell	Camberwell Green	Internals started in 2014/15.
GROSVENOR PARK	2015/16	2015/16	Camberwell	Camberwell Green	As scheduled.
GROVE LANE	2015/16	2015/16	Camberwell	Brunswick Park	As scheduled.
HARFIELD GARDENS	2014/15	2015/16	Camberwell	South Camberwell	Internals started in 2014/15.
HILLCREST	2014/15	2015/16	Camberwell	South Camberwell	Internals started in 2014/15.
ONDINE ROAD	2015/16	2015/16	Camberwell	South Camberwell	As scheduled.

Estate	Planned Start on site Date	Original planned start on site date	Area	Ward	Comment
THE BIRCHES	2015/16	2015/16	Camberwell	South Camberwell	As scheduled.
THE LIMES	2015/16	2015/16	Camberwell	South Camberwell	As scheduled.
CASSINGHURST	2015/16	2015/16	Dulwich	Village	As scheduled.
COLLEGE ROAD ESTATE	2015/16	2015/16	Dulwich	College	As scheduled.
COUNTISBURY HOUSE	2015/16	2015/16	Dulwich	College	As scheduled.
CRAWTHEW GROVE	2015/16	2015/16	Dulwich	East Dulwich	As scheduled.
CRYSTAL PALACE ROAD	2014/15	2015/16	Dulwich	East Dulwich	Brought forward.
EAST DULWICH GROVE	2015/16	2015/16	Dulwich	Village	As scheduled.
ELMWOOD ROAD	2015/16	2015/16	Dulwich	Village	As scheduled.
FRIERN ESTATE	2014/15	2015/16	Dulwich	East Dulwich	Brought forward.
GILLIES COURT	2015/16	2015/16	Dulwich	Gillies Court - Sidcup	As scheduled.
HALLIWELL COURT	2015/16	2015/16	Dulwich	East Dulwich	As scheduled.
HERNE HILL ESTATE	2015/16	2015/16	Dulwich	Village	As scheduled.
LORDSHIP LANE	2014/15	2015/16	Dulwich	College	Electricals where required.
LORDSHIP LANE ESTA	Meeting WDS standard	2015/16	Dulwich	College	
LYTCOTT GROVE ESTA	2015/16	2015/16	Dulwich	Village	As scheduled.
MELFORD COURT	2014/15	2015/16	Dulwich	College	Brought forward.
ST DAVIDS MANSIONS	2014/15	2015/16	Dulwich	Peckham Rye	Brought forward.
WOODLAND ROAD ESTATE	2014/15	2015/16	Dulwich	College	Brought forward.
YORK HOUSE	2015/16	2015/16	Dulwich	College	As scheduled.
ARNOLD DOBSON HOUSE	2015/16	2015/16	Nunhead & Peckham Rye	Nunhead	As scheduled.
BARTON CLOSE	Meeting WDS standard	2015/16	Nunhead & Peckham Rye	The Lane	
BRAYARDS ROAD	2015/16	2015/16	Nunhead &	Nunhead	As scheduled.

Estate	Planned Start on site Date	Original planned start on site date	Area	Ward	Comment
			Peckham Rye		
BRIMMINGTON ESTATE	2015/16	2015/16	Nunhead & Peckham Rye	Livesey Nunhead	As scheduled.
CLIFTON CRESCENT	2015/16	2015/16	Nunhead & Peckham Rye	Livesey	As scheduled.
CONSORT ROAD	Meeting WDS standard	2015/16	Nunhead & Peckham Rye	The Lane	
COPLESTON ROAD	2015/16	2015/16	Nunhead & Peckham Rye	The Lane	As scheduled.
DANIELS ROAD	2015/16	2015/16	Nunhead & Peckham Rye	Nunhead	As scheduled.
EAST DULWICH ROAD	2015/16	2015/16	Nunhead & Peckham Rye	Peckham Rye The Lane	As scheduled.
EVELINA ROAD	2015/16	2015/16	Nunhead & Peckham Rye	Nunhead	As scheduled.
FENWICK ROAD	2015/16	2015/16	Nunhead & Peckham Rye	The Lane	As scheduled.
GAUTREY ROAD	2015/16	2015/16	Nunhead & Peckham Rye	Nunhead	As scheduled.
GOWLETT ROAD	2015/16	2015/16	Nunhead & Peckham Rye	The Lane	As scheduled.
HANOVER PARK	2015/16	2015/16	Nunhead & Peckham Rye	The Lane	As scheduled.
HEATON HOUSE	2014/15	2015/16	Nunhead & Peckham Rye	The Lane	Brought forward.
HOLLYDALE ROAD	2015/16	2015/16	Nunhead & Peckham Rye	Nunhead	As scheduled.
HONOR OAK RISE	2015/16	2015/16	Nunhead & Peckham Rye	Peckham Rye	As scheduled.
KIRKWOOD ROAD	2015/16	2015/16	Nunhead &	Nunhead	As scheduled.

Estate	Planned Start on site Date	Original planned start on site date	Area	Ward	Comment
			Peckham Rye		
LIMES WALK	2015/16	2015/16	Nunhead & Peckham Rye	Peckham Rye	As scheduled.
LINDEN GROVE	2014/15	2015/16	Nunhead & Peckham Rye	Peckham Rye	Brought forward.
LINDEN GROVE ESTAT	2014/15	2015/16	Nunhead & Peckham Rye	Nunhead	Brought forward.
MAXDEN COURT	2015/16	2015/16	Nunhead & Peckham Rye	The Lane	As scheduled.
MONCRIEFF ESTATE	2015/16	2015/16	Nunhead & Peckham Rye	The Lane	As scheduled.
MUNDANIA ROAD	2015/16	2015/16	Nunhead & Peckham Rye	Peckham Rye	As scheduled.
NEW JAMES STREET ESTATE	2015/16	2015/16	Nunhead & Peckham Rye	The Lane	As scheduled.
NUNHEAD ESTATE	2015/16	2015/16	Nunhead & Peckham Rye	Peckham Rye The Lane	As scheduled.
OAK HILL COURT	2015/16	2015/16	Nunhead & Peckham Rye	Peckham Rye	As scheduled.
OLIVER GOLDSMITH ESTATE	2015/16	2015/16	Nunhead & Peckham Rye	The Lane	As scheduled.
PHILIP WALK	2015/16	2015/16	Nunhead & Peckham Rye	The Lane	As scheduled.
POMEROY STREET	2015/16	2015/16	Nunhead & Peckham Rye	Nunhead	As scheduled.
QUEENS ROAD ESTATE	2015/16	2015/16	Nunhead & Peckham Rye	Nunhead	As scheduled.
RAUL ROAD	2015/16	2015/16	Nunhead & Peckham Rye	The Lane	As scheduled.
REEDHAM STREET	2015/16	2015/16	Nunhead &	The Lane	As scheduled.

Estate	Planned Start on site Date	Original planned start on site date	Area	Ward	Comment
			Peckham Rye		
RUSSELL COURT	2015/16	2015/16	Nunhead & Peckham Rye	The Lane	As scheduled.
RYE HILL ESTATE	2014/15	2015/16	Nunhead & Peckham Rye	Peckham Rye	Brought forward.
SASSOON HOUSE	2015/16	2015/16	Nunhead & Peckham Rye	Nunhead	As scheduled.
SOLOMONS PASSAGE	2015/16	2015/16	Nunhead & Peckham Rye	Peckham Rye	As scheduled.
ST MARYS ROAD	2015/16	2015/16	Nunhead & Peckham Rye	Nunhead	As scheduled.
STANBURY ROAD	2015/16	2015/16	Nunhead & Peckham Rye	Nunhead	As scheduled.
TAPPEFIELD ESTATE	2015/16	2015/16	Nunhead & Peckham Rye	Nunhead	As scheduled.
THERAPIA ROAD	2015/16	2015/16	Nunhead & Peckham Rye	Peckham Rye	As scheduled.
UNDERHILL ROAD	Fire safety works	2015/16	Nunhead & Peckham Rye	Peckham Rye	Works through sheltered programme.
WHORLTON ROAD	2015/16	2015/16	Nunhead & Peckham Rye	The Lane	As scheduled.
CARLTON GROVE	2014/15	2015/16	Peckham	Livesey	Brought forward.
CAROLINE GARDENS	2015/16	2015/16	Peckham	Livesey	As scheduled.
CATOR STREET	2014/15	2015/16	Peckham	Peckham	Brought forward.
DAVEY STREET	2014/15	2015/16	Peckham	Peckham	Brought forward.
FRIARY ESTATE	2014/15	2015/16	Peckham	Livesey	Brought forward.
FRIARY ROAD	2015/16	2015/16	Peckham	Livesey	As scheduled.
GERVASE STREET	2015/16	2015/16	Peckham	Livesey	As scheduled.

Estate	Planned Start on site Date	Original planned start on site date	Area	Ward	Comment
GLOUCESTER GROVE ESTATE	2014/15	2015/16	Peckham	Peckham	Brought forward.
KINGS GROVE	2014/15	2015/16	Peckham	Livesey	Brought forward.
LEDBURY ESTATE	2015/16	2015/16	Peckham	Livesey Peckham	As scheduled.
MONTPELIER ROAD	2014/15	2015/16	Peckham	Livesey	Brought forward.
NAYLOR ROAD	2014/15	2015/16	Peckham	Livesey Peckham	Brought forward.
NORTH PECKHAM ESTATE	2014/15	2015/16	Peckham	Peckham	Brought forward.
OLIVER GOLDSMITH ESTATE	2015/16	2015/16	Peckham	Peckham	As scheduled.
SUMNER ROAD	2014/15	2015/16	Peckham	Peckham	Brought forward.
UNWIN ESTATE	2015/16	2015/16	Peckham	Livesey	As scheduled.
WILLOWBROOK ESTATE	2014/15	2015/16	Peckham	Peckham	Brought forward.

Warm, Dry, Safe Street Properties

Status: See individual schemes below
Type of works: WDS

Area	Planned Start on site Date	Original planned start on site date	Area	Ward	Comment
WDS Street Properties 15/16	2015/16	2015/16	Various	Various	15/16 street properties programmes are in 5 batches, one of which started on site with the other 4 batches starting in 2015/16.

Hawkstone Refurbishment

Status: Hawkstone low rise expected on site in 2013/14
Type of works: WDS

Area	Planned Start on site Date	Original planned start on site date	Comment
Hawkstone Refurb	2013/14	2015/16	Hawkstone Low Rise internal started in 2013/14 with the externals starting in 2014/15.

Maydew Refurbishment

Status: **Not started**
Type of works: **WDS**

Area	Planned Start on site Date	Original planned start on site date	Comment
Maydew Refurb	2015/16	2015/16	Maydew expected to start late in 2015/16.

Minor Voids Capitalisation

Status: **Ongoing programme**
Type of works: **Capitalisation of voids works**

Area	Planned Start on site Date	Original planned start on site date	Comment
Minor Voids Capitalisation	Ongoing Programme	Ongoing Programme	Capitalisation only.

Minor Voids WDS Works

Status: **Ongoing programme**
Type of works: **Minor voids works**

Area	Planned Start on site Date	Original planned start on site date	Comment
Minor Voids WDS Works	Ongoing Programme	Ongoing Programme	Minor voids works.

Works to Sheltered Accommodation

APPENDIX 4

Status: **Ongoing programme**
 Type of works: **Warm, dry and Safe, Fire Safety works, decorations, boilers**

The works programmes for the borough's twenty Sheltered Housing Units includes fire safety upgrades (front and communal doors; ceiling renewal; fire stopping and escape routes), installation of sprinkler systems, and communal internal and external decorations, along with remedial work as necessary. Work is also being carried out to renew boilers and pipework. Where these works have been identified as overlapping with the scope of the Warm, Dry and Safe programmes, the packages are being coordinated to minimise resident disruption.

Sheltered Scheme	Area	Ward	Works being undertaken	Start on site / note
Jack Jones House	Nunhead & Peckham Rye	The Lane	Fire doors and upgrades Interior decorations Minor external decorations WDS works (electrics) / some kitchens / bathrooms Sprinkler system	Complete Complete Complete 2015/16 2015/16
George Walter Court	Rotherhithe	Livesey	Fire doors and upgrades; Interior decorations; WDS works (kitchens/bathrooms; electrics); Sprinkler system Boilers (part of SELCHP)	Complete Complete Complete In progress
Russell Court	Nunhead & Peckham Rye	The Lane	Fire doors and upgrades; Interior decorations; Minor external decorations WDS works (electrics) Sprinkler system	Complete Complete Complete 2015/16 Complete
Barset	Nunhead & Peckham Rye	Nunhead	Fire doors and upgrades; Interior decorations; Minor external decorations WDS works (electrics) Sprinkler system	Complete Complete Complete 2015/16 In progress
King Charles Court	Walworth	Newington	Fire doors and upgrades; interior decorations;	Complete Complete

Sheltered Scheme	Area	Ward	Works being undertaken	Start on site / note
			WDS works (kitchens/bathrooms; envelope; electrics) sprinkler system; damp remedial work Boilers	Complete Complete Complete 2015/16
Ray Gunter	Walworth	Newington	Fire doors and upgrades; Minor external decorations; WDS works; sprinkler system	Complete Complete Complete In progress
Brook Drive	Borough & Bankside	Cathedrals	Fire doors and upgrades; Minor external decorations; WDS works; sprinkler system	In progress In progress In progress In progress
Keetons	Bermondsey	Riverside	Fire doors; WDS works (kitchens/bathrooms; envelope; electrics) sprinkler system	2015/16 K / B complete 2015/16
Lew Evans	Nunhead & Peckham Rye	Peckham Rye	Fire doors and upgrades; Sprinkler system; Minor external decorations; Boilers	Complete 2015/16 2015/16 2015/16
Lucy Brown	Borough & Bankside	Cathedrals	Fire doors and upgrades; WDS works (kitchens/bathrooms; envelope; electrics) sprinkler system; Minor external decorations;	Complete By 2015/16 By 2015/16 By 2015/16
Consort	Nunhead & Peckham Rye	The Lane	WDS works (kitchens/bathrooms; envelope; electrics) Sprinkler system	Complete 2016
Cossall	Nunhead & Peckham Rye	Nunhead	WDS works (kitchens/bathrooms; envelope; electrics) Sprinkler system	Complete 2015/16
Hughes House	Walworth	Newington	WDS works (kitchens/bathrooms; envelope; electrics) Fire doors and upgrades; sprinkler system Boiler	Complete Complete Complete
Locksfield	Walworth	East Walworth	Fire doors and upgrades; WDS works (kitchens/bathrooms; envelope; electrics);	2015/16 In progress

Sheltered Scheme	Area	Ward	Works being undertaken	Start on site / note
			sprinkler system Boiler	2015/16 Complete
D'Eynesford	Camberwell	Camberwell Green	Fire doors and upgrades; WDS works (kitchens/bathrooms; envelope; electrics); Sprinkler system	Complete 2015/16 2015/16
Rock Grove	Bermondsey	South Bermondsey	Fire doors and upgrades; WDS works (kitchens/bathrooms; envelope; electrics); sprinkler system Boilers (part of SELCHP)	2015/16 2015/16 2015/16
Marden	Bermondsey	Riverside	Fire doors and upgrades; WDS works (kitchens/bathrooms; envelope; electrics); Sprinkler system Boilers (part of SELCHP)	Complete Complete 2015/16
Grosvenor Park	Camberwell	Camberwell Green	Fire doors and upgrades; WDS works; sprinkler system	2015/16 2015/16 2015/16
Harry Lambourn	Peckham	Livesey	Fire doors and upgrades; WDS works; sprinkler system	In progress In progress In progress
Pedworth	Rotherhithe	Rotherhithe	Fire doors and upgrades; WDS works; sprinkler system Boilers (part of SELCHP)	In progress In progress In progress